

Transmission mode

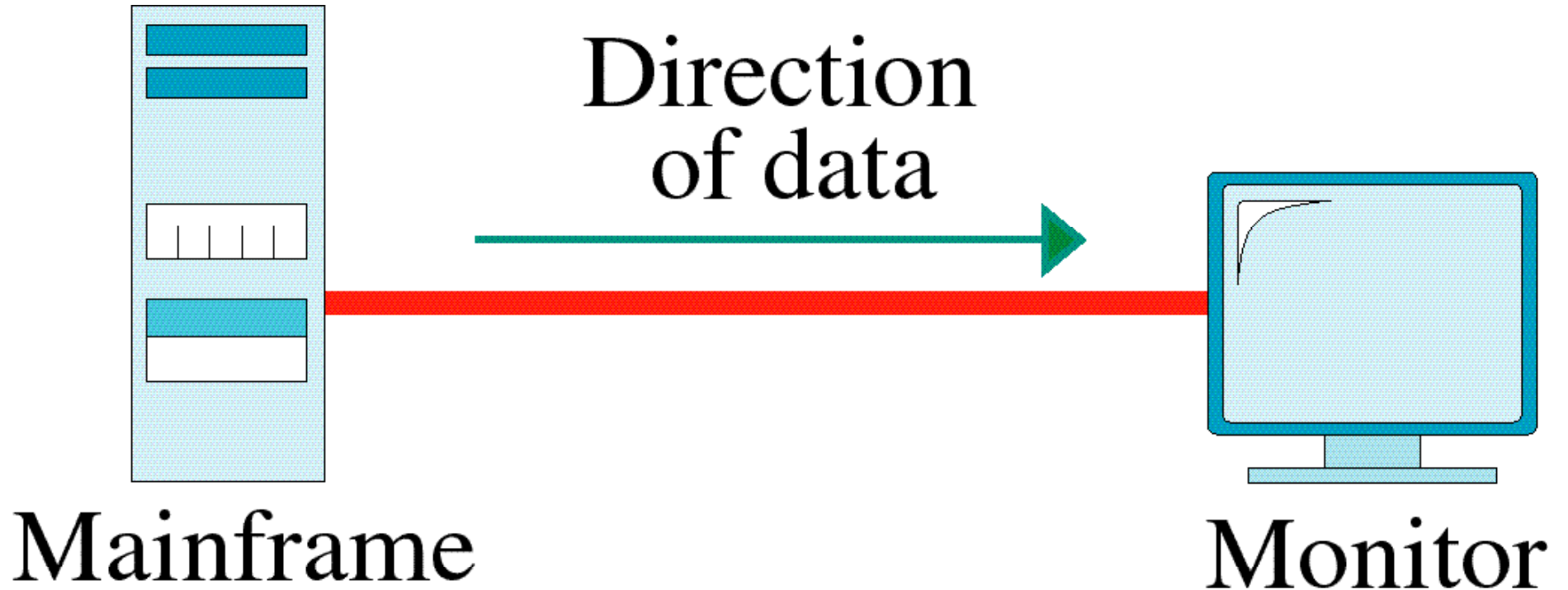
```
graph TD; A[Transmission mode] --> B[Simplex]; A --> C[Half-duplex]; A --> D[Full-duplex]
```

Simplex

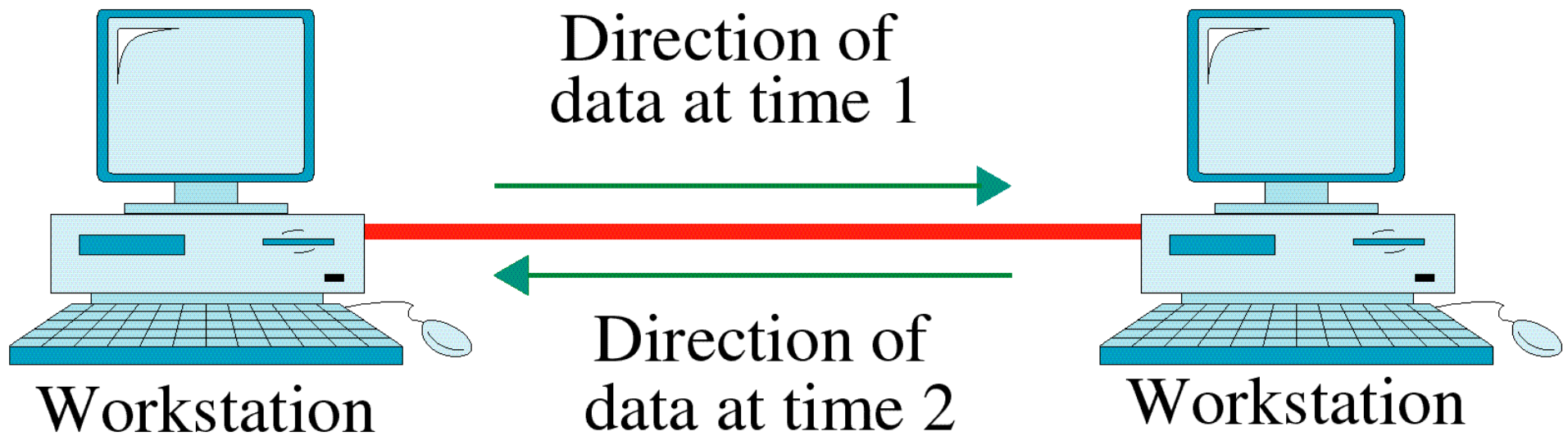
Half-duplex

Full-duplex

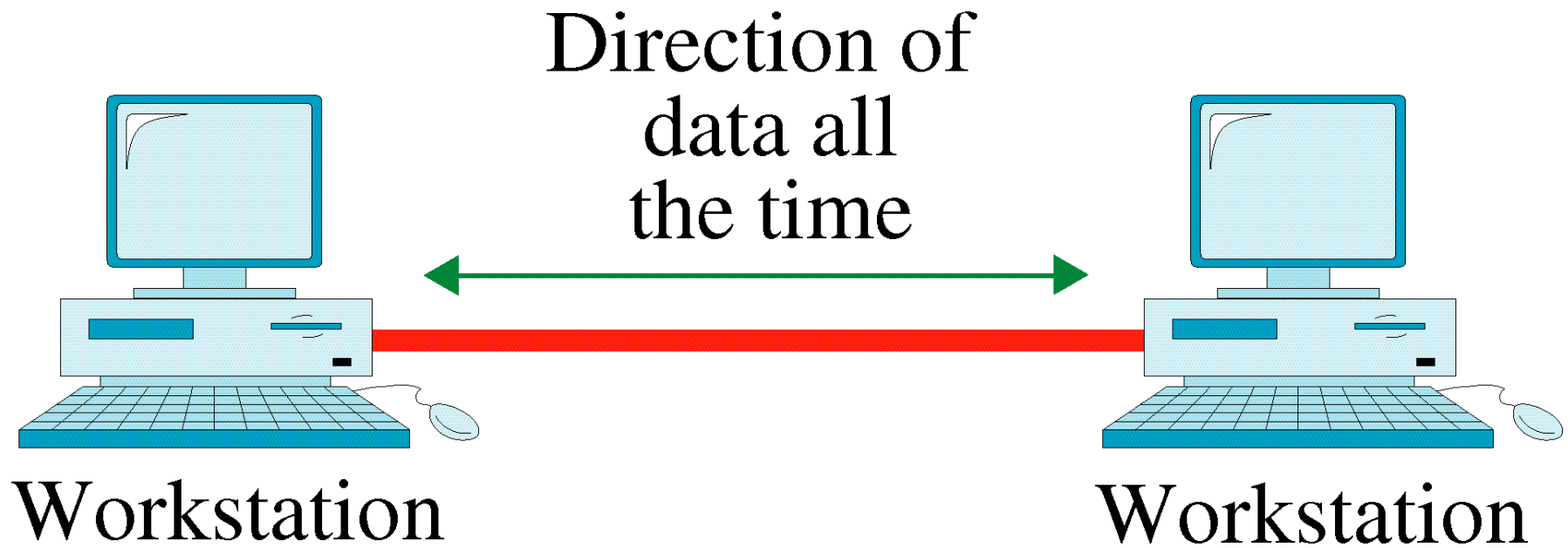
Simplex



Half-Duplex



Full-Duplex



Network

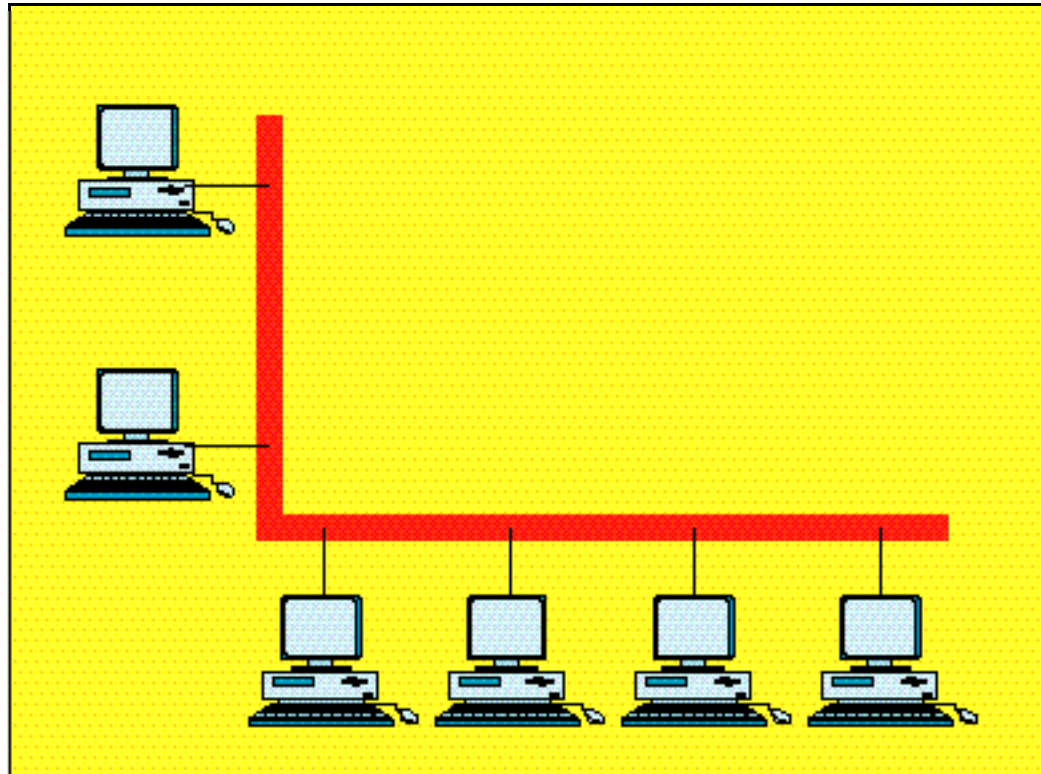
```
graph TD; Network[Network] --- LAN[Local area network (LAN)]; Network --- MAN[Metropolitan area network (MAN)]; Network --- WAN[Wide area network (WAN)];
```

Local area
network
(LAN)

Metropolitan area
network
(MAN)

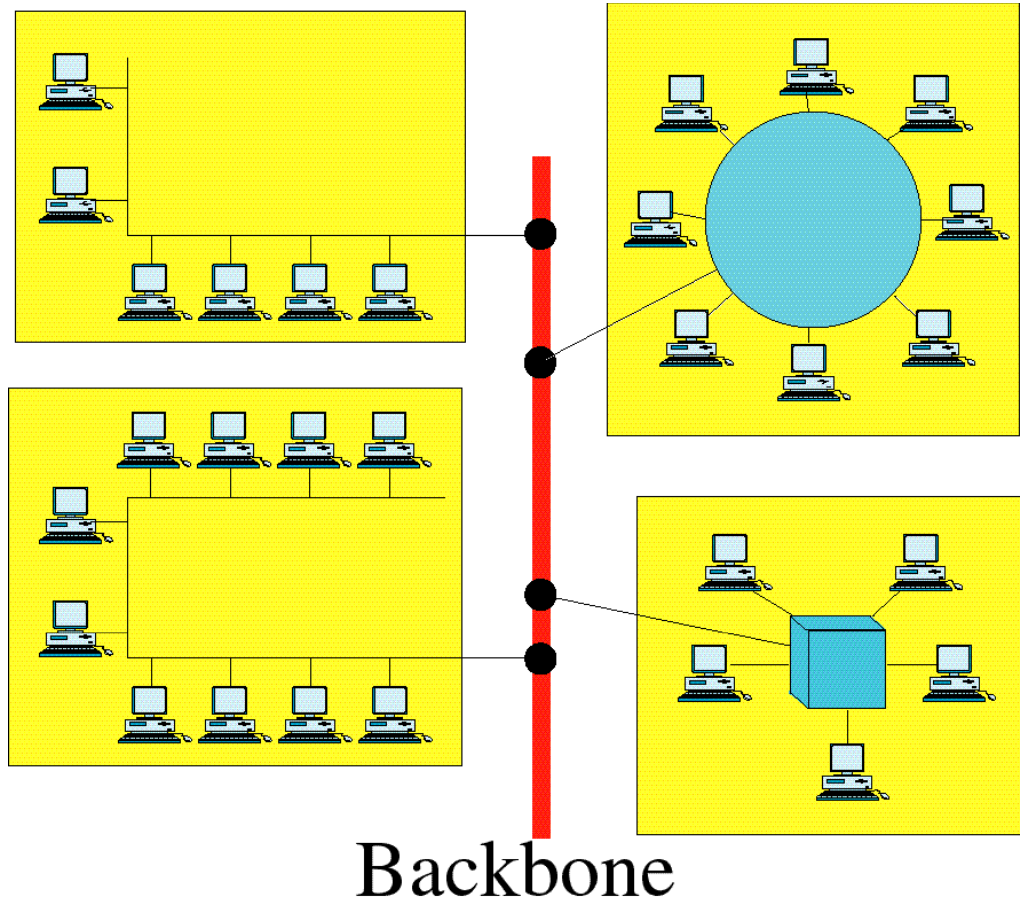
Wide area
network
(WAN)

Local Area Network



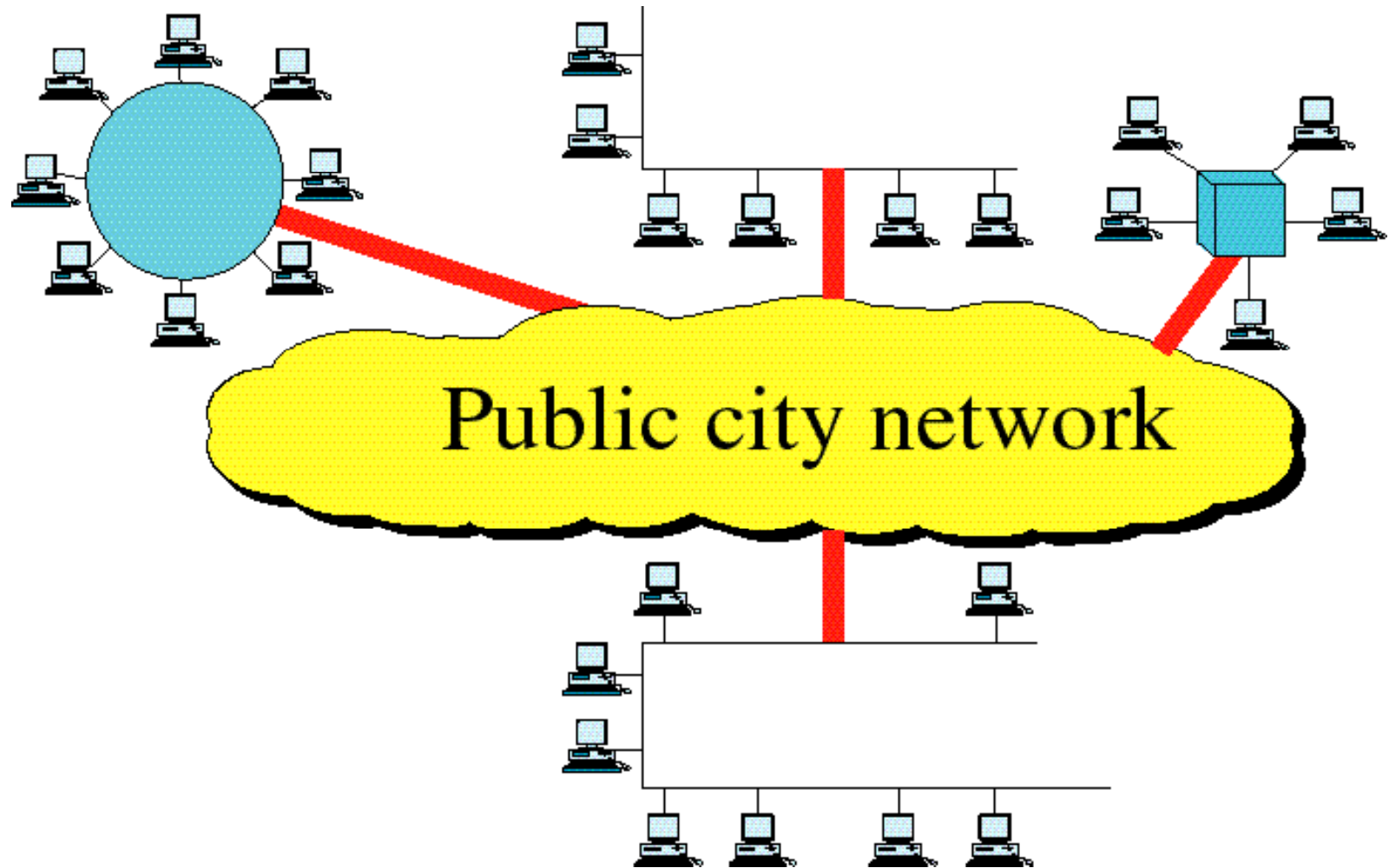
Single building LAN

Local Area Network

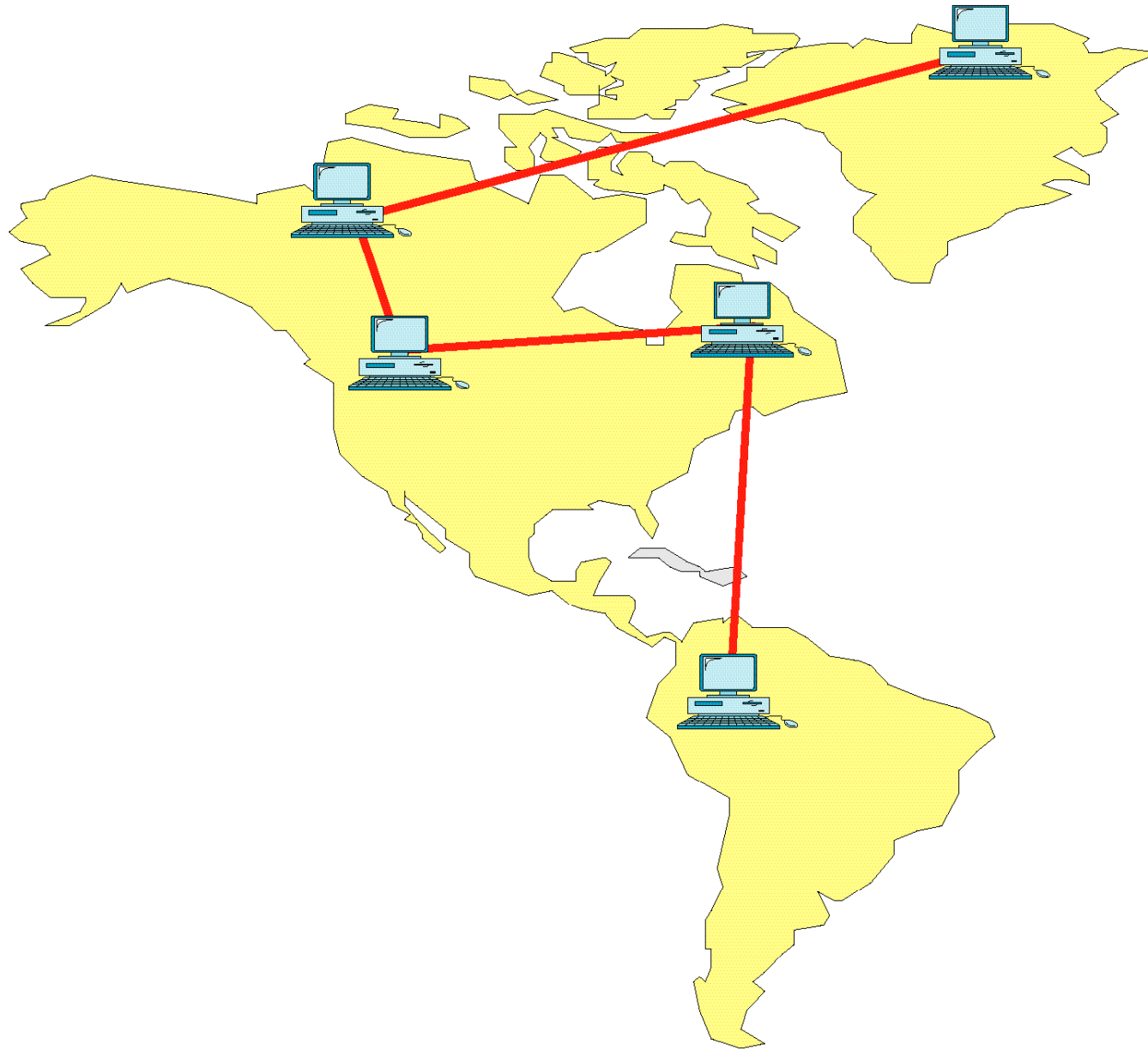


Multiple building LAN

Metropolitan Area Network



Wide Area Network



Internetwork (Internet)

